



**Director's Showcase
International**

ITEM NAME: 42" Podium / 52" Podium

ITEM SKU: PD42 / PD42B / PD52 / PD52B



**For assistance with assembly, please contact
Director's Showcase International Customer Care Center
1-800-893-8171**

ITEMS INCLUDED IN THE BOX:

- 42" or 52" Podium [qty: 1]
- Boundary Rail - Large [qty: 1]
- Boundary Rail - Small [qty: 2]
- Rubber wheels [qty: 2]
- Wheel bracket - (has 3 holes) [qty: 2]
- Wheel support plate - (has 2 holes) [qty: 2]
- Axle Bolt with nut [qty: 2]
- 1/4" x 1.75" Hex Head Bolt [qty: 2]
- 1/4" x 2.5" Hex Head Bolt [qty: 6]
- 1/4" O.D. Flat Washer [qty: 10]
- 1" O.D. Flat Washer [qty: 2]
- 1/4" Nylon Insert Lock Nut [qty: 4]
- 1/4" Wing Nut [qty: 4]
- Adhesive Tread Tape [qty: 3 (for 42" podium) or 4 (for 52" podium)]

TOOLS NEEDED:

The following additional tools are required for assembly (not included):

- Two 1/4" wrenches/sockets (for 1/4" nuts and bolts)
- Two 1/2" wrenches/sockets (for 1/2" axle nuts and bolts)

IMPORTANT PRODUCT INFORMATION:



THIS PACKAGE MAY CONTAIN SMALL ITEMS WHICH SHOULD BE KEPT AWAY FROM CHILDREN

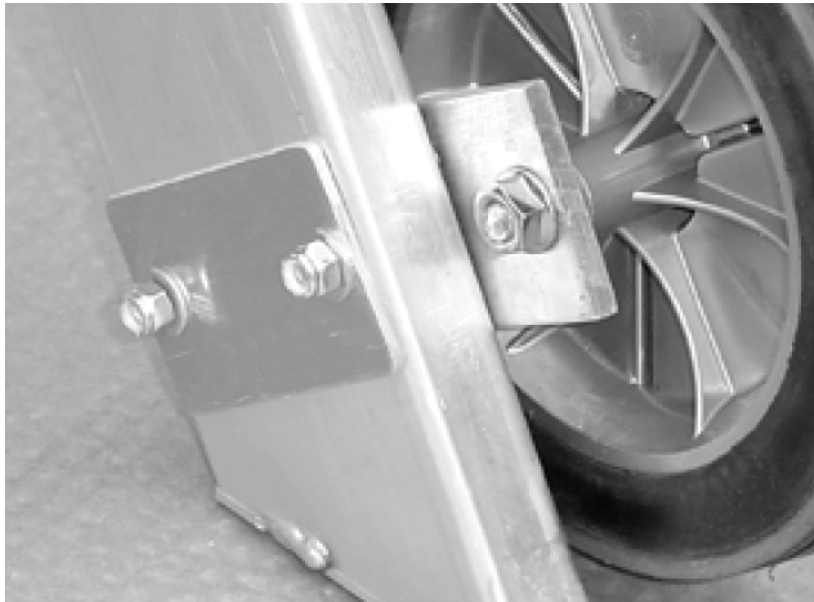
Maximum load: 300 lbs.

Maximum occupancy: 1 person

STEP-BY-STEP ASSEMBLY:

1

STEP 1: Place a wheel bracket to the OUTSIDE of the podium leg and the wheel support plate on the INSIDE of the podium leg. Secure these brackets in place by using two of the 1/4" x 1.75" hex head bolts, two 1/4" washers and two 1/4" nylon lock nuts. Repeat this step for the other leg.



2

STEP 2: Add the wheels by inserting the axle bolt through the center of the wheel and into the wheel bracket. Secure the wheel with the nut and tighten with a 1/2" wrench.

3

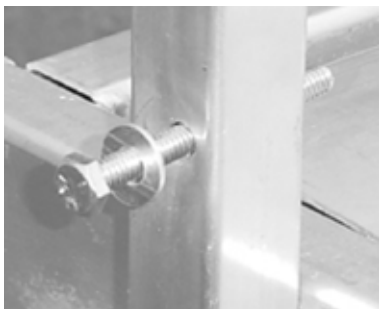
STEP 3: Add the side (smaller) boundary rails to the side of the podium platform using the 1/4" x 2.5" hex head bolt, 1/4" washer, and 1/4" wing nut. NOTE: Insert the bolt from inside (under the platform of the podium) then through the boundary rail and then add the washer and wing nut.

3/4

STEP-BY-STEP ASSEMBLY (continued):

4

STEP 4: Attach the forward boundary rail by inserting a 1/4" x 2.5" hex head bolt (with 1/4" washer) through the OUTSIDE of the side boundary rail (a). Next, add a 1" flat washer (b). Finally, add the forward boundary rail followed by a 1/4" washer and 1/4" nylon lock nut (c). Repeat this process for both sides.



5

STEP 5: Keep the forward boundary rail in place by slipping the lock pin through both rails .

6

STEP 6: Attach the adhesive tread tape to the ladder steps of the podium.

For assistance with assembly, please contact
Director's Showcase International Customer Care Center
1-800-893-8171